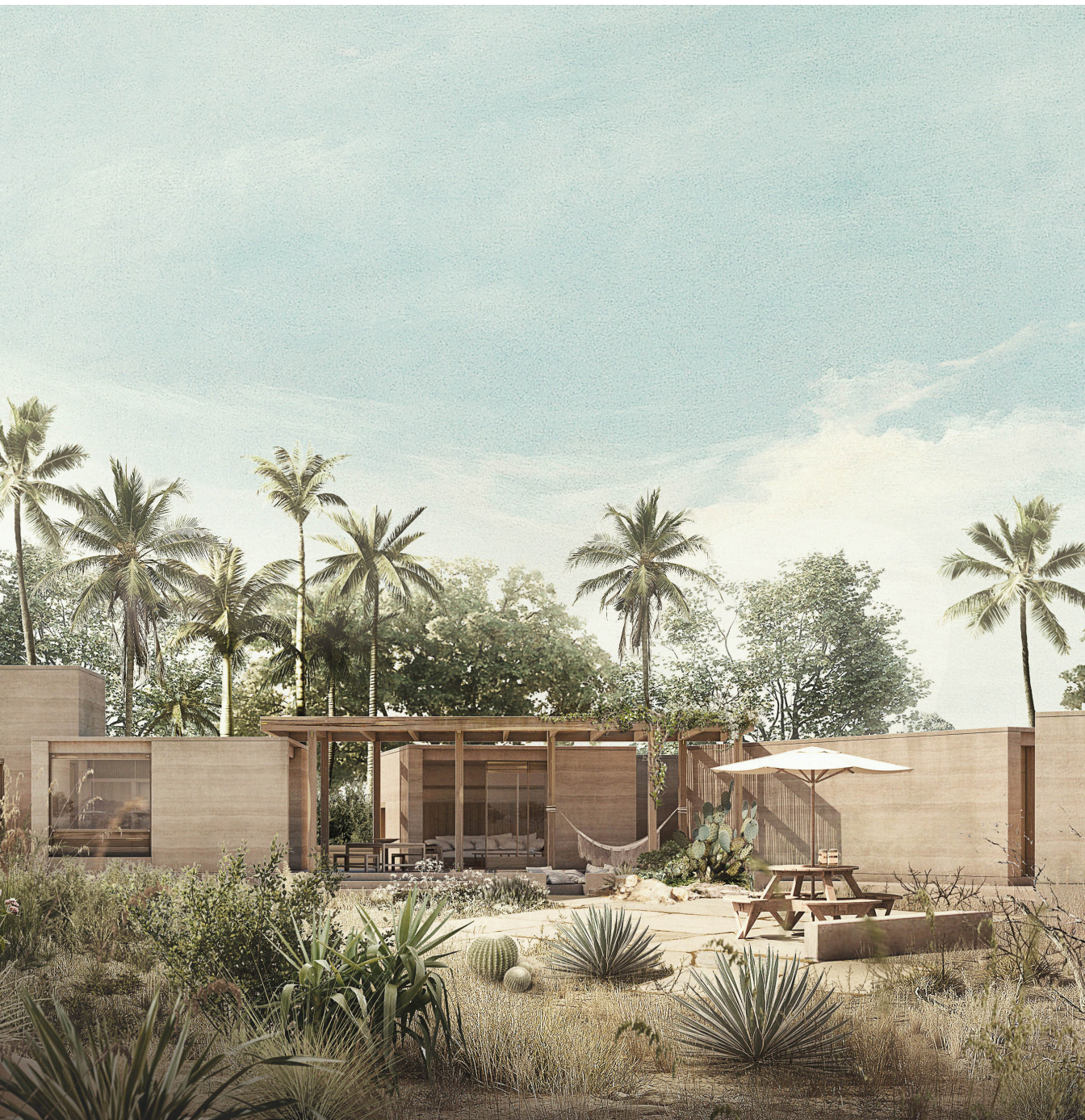


EL PESCADERO

Salara Residence 10



Immersed in the beautiful landscapes of El Pescadero community, ten environmentally conscious residences sit within five acres of lush vegetation, a myriad of fruit trees, and an established palm grove.



3 BEDS | 3.5 BATHS | MLS: 22-4432

Architecturally designed and built with natural resources and local materials to integrate seamlessly with nature, the project will utilize domestic water in a 100% self-sufficient manner without using harmful chemicals for treatment. Using local and renewable materials, the project's construction will emit 84% less greenhouse gases than conventional construction.

Thermally efficient materials will take advantage of the micro-climate in the area, reducing the need for and use of air conditioning.

Spacious homesites range from 1,321 SM up to 1,889 SM (14,219 SF – 20,333 SF), allowing ample room for the home, covered terraces and patios, and amenities such as a plunge pool, BBQ area, vegetable gardens, and more.



\$920,000 USD
2,325.00 AC SF | 14,520.52 LOT SF