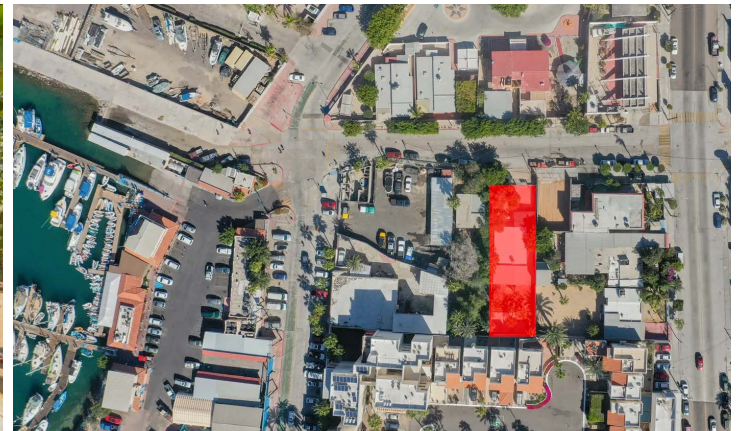


# LEGASPI 35 DEVELOPER'S LOT

LA PAZ | MLS: 22-4741 | 3 BEDS | 2 BATHS | \$650,000 USD | 1,140.97 SF LOT | 6,650.16 LOT SIZE



## Listing Overview

Unique Land in the city of La Paz, located on Legaspi street between Abasolo Avenue (Malecon extension) and Topete street (cycle track).

Located just one block from the sea and the Marina Cortés, its restaurants and shops, One step away from the Malecón de La Paz, close to supermarkets and shopping malls, in this Central and Quiet Neighborhood.

Ideal location for any residential or commercial project, its proximity to these areas of interest make it very relevant.

-617.82 m2, (13 m front by 47 m deep)

LAND USE:  
RESIDENTIAL / MIXED  
COS: 0.75  
CUS: 3.8  
CAS: 0.25  
ALLOWED FLOORS: 5 (max height 17.5m)

All services available.

The only lot for sale in the area with these characteristics.

## Details

ROAD TYPE: Paved; Street Front Meters: 13

TITLE: Escritura

CONNECTIVITY: Phone on Site

ELECTRICITY: CFE

WATER: Muni

SEWAGE: Munic

HOW TO SHOW: By Appointment Only

TOPOGRAPHY: Flat

POTENTIAL USE: Development Parcel



THEAGENCYLAPEZ.COM

## BRUNO BOURLON

SALES MANAGER, LA PAZ  
BRUNO@THEAGENCYLAPEZ.COM  
+52.612.111.0638

## KITSYA BOURLON

REAL ESTATE ADVISOR, LA PAZ  
KITSYA@THEAGENCYLAPEZ.COM  
+52.333.474.8724

## HUGO ALBA

REAL ESTATE ADVISOR, LA PAZ  
HUGO@THEAGENCYLAPEZ.COM  
+52 612 153 1670